



**COAT
FLEX**

COATED FABRICS FOR YOUR APPLICATIONS

EXPERTS IN FLEXIBLE PVC, EXTRUFLEX DEVELOPS, PRODUCES AND MARKETS COATED TECHNICAL FABRICS FOR YOUR APPLICATIONS.



With over 65 years of experience gained in France and abroad, we manage interactions with our customers in order to provide you with efficient solutions to meet your existing and future challenges.

Extruflex has 3 production sites and 9 commercial subsidiaries around the world.

QUALITY, SERVICE AND COMMITMENT GUIDE OUR DAILY ACTIONS

//// TECHNICAL PROPERTIES

 <p>REACH compliant</p>	 <p>Easy to unroll</p>	 <p>Easy welding</p>	 <p>Fire retardant M2/B1</p>	 <p>Cold resistant</p>
 <p>Eco-Friendly approach Low carbon footprint</p>	 <p>Minimum loss at the end of the roll</p>	 <p>UV resistant</p>	 <p>Low shrinkage</p>	 <p>Weather resistant</p>
 <p>Wide range of colours</p>	 <p>Easy cleaning</p>	 <p>Dirt-repellent surface</p>	 <p>Flexibility</p>	 <p>Longevity</p>
 <p>Special width requested? Cutting service available</p>				



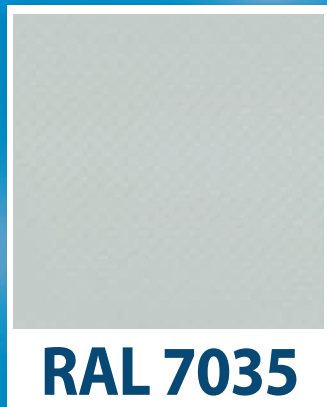
//// PRODUCT RANGE



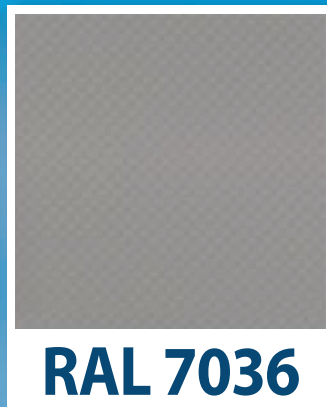
RAL 9010



RAL 9016



RAL 7035



RAL 7036



RAL 3002



RAL 1003



RAL 5002



RAL 6026



DIMENSIONS

670 grams in 250cm width and 60m length
900 grams in 300cm width and 60m length

Other colors and dimensions available on request

//// SPECIFICATIONS

PHYSICAL PROPERTIES	TEST METHOD	UNITS	670	670 FR 	900	900 FR 
TOTAL WEIGHT	DIN EN ISO 2286-2	g/m ²	670	670	900	900
LENGTH	-	M	60	60	60	60
BASE FABRIC (YARN 1100 DTEX)	-	-	SIMPLE WEAVING L1/1 9x9 (23x23)		PANAMA WEAVING P2/2 12x12 (30x30)	
UV RESISTANCE	-	-	✓			
SURFACE ASPECT	-	-	GLOSSY / GLOSSY		GLOSSY / GLOSSY	
FIRE RESISTANT	NF P92-512/DIN 4102			M2 / B1	-	M2 / B1
TEMPERATURE (MIN/MAX)	DIN EN 1876-1	°C	-30°C ~ 70°C			
TEARING STRENGTH (WARP/WEFT)	DIN 53363	N	320 / 300	320 / 300	550 / 500	550 / 500
TENSILE STRENGTH (WARP/WEFT)	DIN EN ISO 1421	N / 5cm	3000 / 2800	3000 / 2800	4000 / 4000	4000 / 4000
ADHESION STRENGTH (TOP/BACK)	EN ISO 2411	N / 5cm	> 100	> 100	> 100	> 100
MOLD RESISTANT	-	-	✓			
LIGHT TRANSMISSION	ISO 13468-1	%	9	7	5	0-2

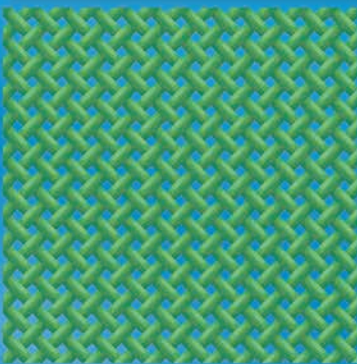
Other weight possible on demand

Weight (-0/+20 g/m²); Width +/- 10mm

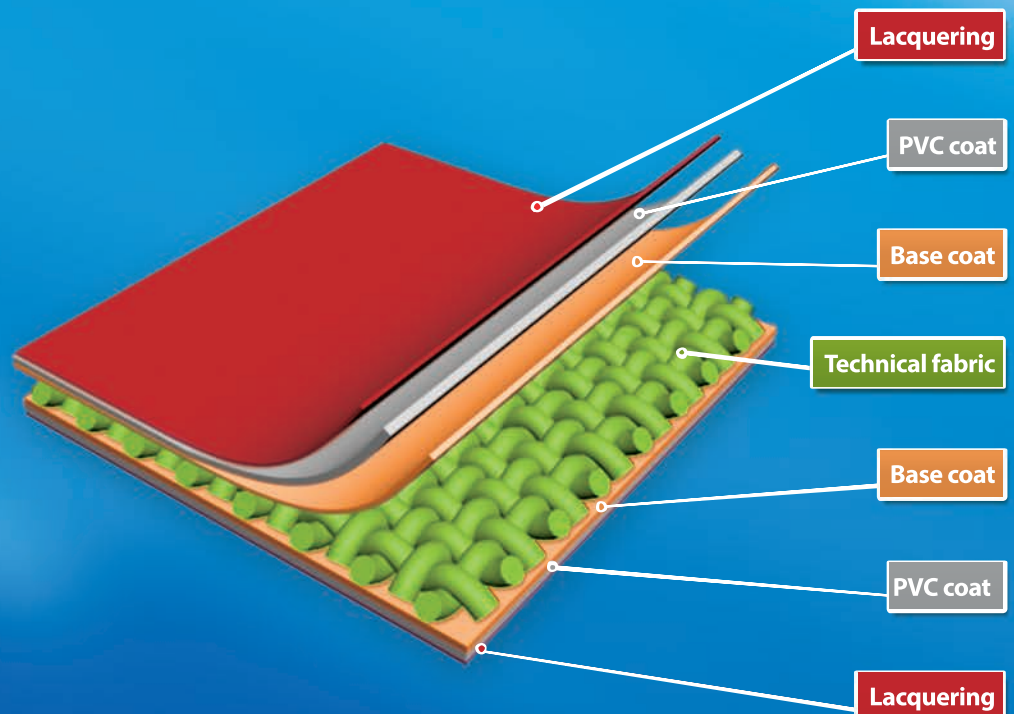
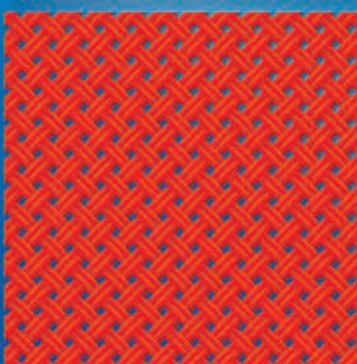
 Fire retardant

These specifications are given for information only and are based on our current knowledge of the products concerned. This information is given to our customers for the purpose of informing them and helping them in their research, and does not constitute any formal or implicit guarantee as to its use.

Simple Weaving L1/1 9x9



Panama Weaving P2/2 12x12



//// APPLICATIONS



//// OUR LOCATIONS



EXTRUFLEX do Brazil
Tel. : +55 (41) 3019 2530
contact-edb@extruflex.com

EXTRUFLEX France
Tel. : +33 (0)1 41 49 99 30
extruflex@extruflex.com

EXTRUFLEX Germany
Tel. : +49 (0) 228 329 58 690
contact-gmbh@extruflex.com

EXTRUFLEX Asia-Pacific
Tel. : +86 0760 22289080
contact-eap@extruflex.com

EXTRUFLEX Italy
Tel. : +39 (0) 335 628 0414
contact-it@extruflex.com

EXTRUFLEX North America
Tel. : +1 888 501 1095
info@extruflexna.com

EXTRUFLEX UK
Tel. : +44 (0)1454 322 3351
contact-uk@extruflex.com

EXTRUFLEX Russia
Tel. : +7 919 990 1590
contact-ru@extruflex.com.com

MORE DETAILS
ON OUR PRODUCTS



EXTRUFLEX.COM

